



DATA SHEET

# CHRONOS



GENERAL  
ADMISSION



PREMIUM

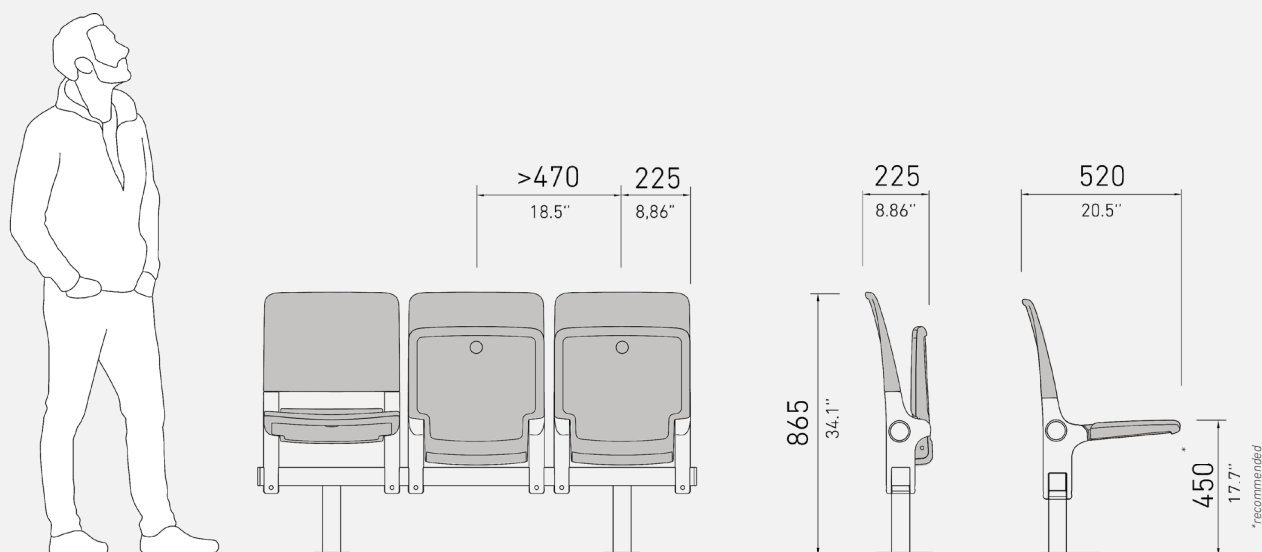
**Ergonomic and sustainable foldable seat**, designed with an eco-design approach that considers environmental impact at every stage of the process. Manufactured with recyclable materials, it offers an environmentally responsible solution without compromising comfort or durability.

Its elegant, functional design and wide range of finishes and accessories make it suitable for different areas within **sports venues, from general seating to premium spaces**. It is a maintenance-free product, ideal for high-turnover environments such as **stadiums and arenas**.

# | CHRONOS



## DIMENSIONS



Standard **Chronos** Model

\* See annex for all configurations

| Features



The seat can be **riser-mounted** in the installation area (grandstand).



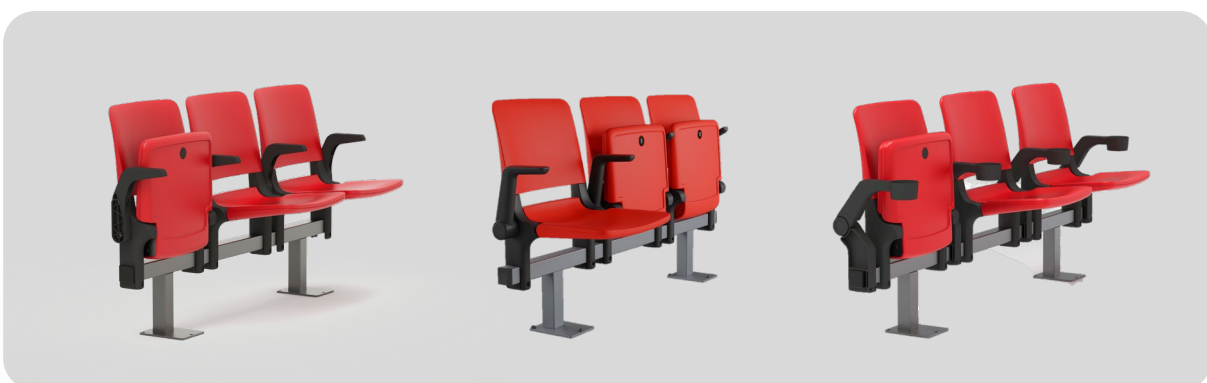
The seat can be **floor-mounted** in the installation area



**Seat mounted on a steel beam**, using *clamped or welded brackets*, with an adjustable connection between the beam and the legs.



**Ergonomic backrest** for optimal comfort and support.



Different armrest options are available for this seat.

FIGUERAS reserves the right to apply any modifications or updates required for the improvement or commercialisation of its products.

| Accessories



Tip-up armrest with plastic cover



Semi-upholstered tip-up armrest



Fixed armrest



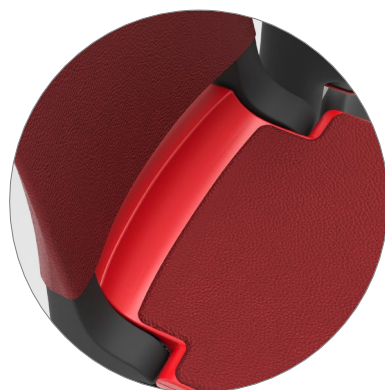
Tip-up armrest with cup holder



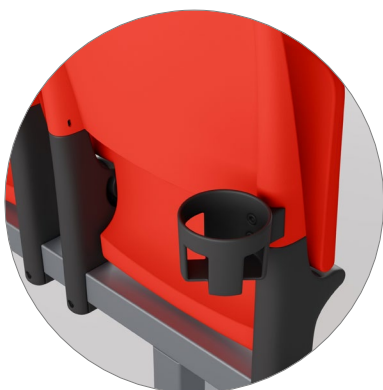
Row numbering



Seat numbering



Upper seat section and backrest upholstered [T2]



Rear cup holder



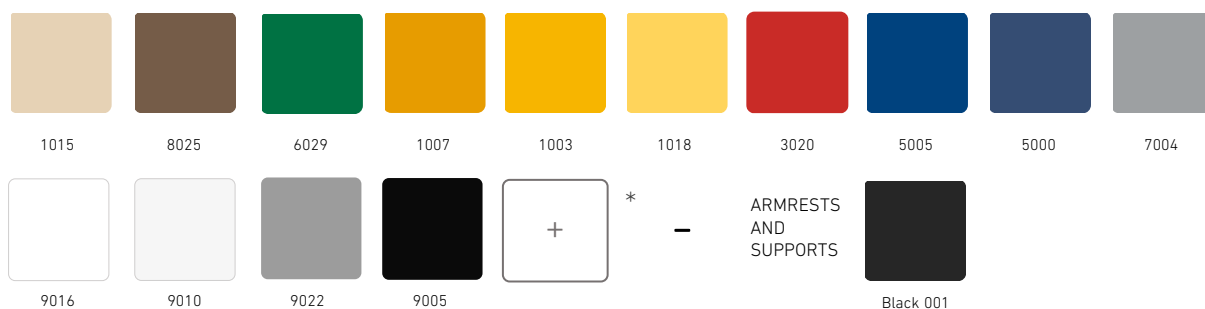
\* For additional options and accessories, please contact us.

FIGUERAS reserves the right to apply any modifications or updates required for the improvement or commercialisation of its products.

# | Materials and Finishings

## PLASTIC PARTS SELECTION

OUTDOOR

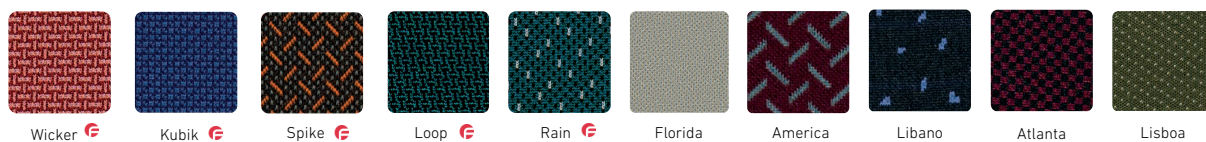


\*Colour options with UV/FR protection validated by Xenotest. For other available options, please contact our sales team.

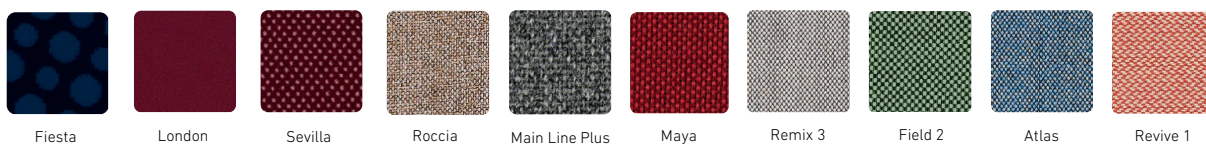
## UPHOLSTERY SELECTION

INDOOR

### COMFORT

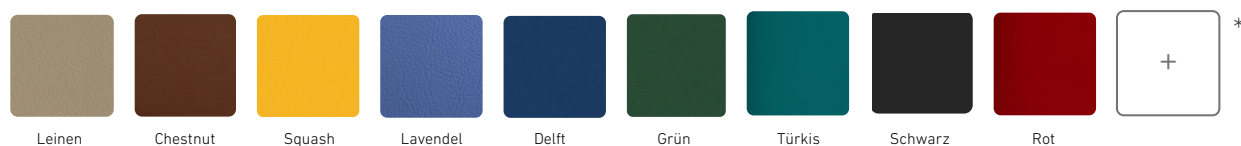


### ELEGANCE



OUTDOOR

### TECH Tecno Valencia (SPRADLING)\*



## METALLIC PARTS SELECTION



\* Please contact our sales team for the full range of available upholstery and finishes.

FIGUERAS reserves the right to apply any modifications or updates required for the improvement or commercialisation of its products.

# Technical Specifications

> Dimensions:

- Centre-to-centre width: > 470 mm
- Depth: 225 mm
- Height: 865 mm

> Seat and Backrest:

Set consisting of a seat and backrest made of **injected copolymer polypropylene**, designed for sports venues and public spaces. Its ergonomic design, weather resistance, and low maintenance ensure long service life and user comfort.

- **Material:** Textured, soft copolymer polypropylene.
- **Backrest inclination:** fixed at 12° for enhanced comfort and ergonomics.
- **Seat system:** gravity tip-up with an internal steel counterweight; no additional mechanisms and no maintenance required.
- **UV protection:** in accordance with ISO 4892-2.
- **Fire resistance:** UNE-EN 1021: Parts 1 and 2; CAL TB 117.
- **Maintenance:** no lubrication required; easy cleaning with water and neutral detergent.

> Upholstery: \*

Fire reaction standards:

- **Spain:** UNE-EN 1021 Parts 1 and 2.
- **France:** NF D 60-013.Italy: UNI 9175 Class 1.IM.
- **Germany:** DIN 66084.
- **UK:** BS 5852 (with approved fabric).
- **USA:** CAL TB 117.

> Side Panels and Armrests:

Side supports made of polyamide (PA) reinforced with 30%

glass fibre. Designed to house the seat pivot axis, with integrated stops that limit movement. They form a compact assembly with the seat and backrest, ensuring easy handling and installation.

- **Material:** glass-fibre-reinforced polyamide.
- **UV Protection :** according to ISO 4892-2.
- **Available color:** Black.

> Metal Structure:

Manufactured from steel tube and plate, arc-welded with continuous wire.

- **Cold-galvanised + powder-coated** (70–80 µm), according to EN ISO 1461.
- **Tubes up to 2 mm:** UNE-EN 10305 Part 3: E-220.
- **Tubes > 2 mm:** S275JR.
- **Steel plate:** EN 10111: DD12.

> Installation:

- Mounted on a steel beam using side supports and front fixation, with no interference with beam legs.
- Compatible with floor-mount, riser-mount, or Figueras mobile systems.
- Fast installation and removal.

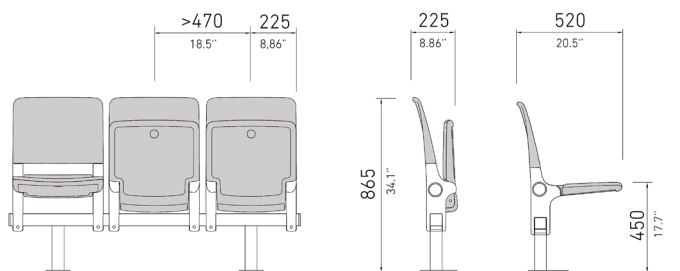
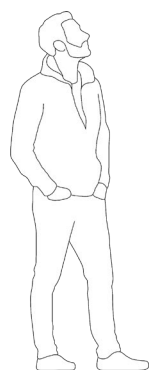
## Certificates

	General seat	Metal parts	Plastic parts	Foam	Fabric	Fire Barrier
STANDARD OPTION	UNE-EN ISO 9001 / 14001	●				
	UNE-EN ISO 14006	●				
	UNE-EN 12727 – Level 4	●				
	ISO 4892-2			●		
	UNE-EN ISO 9227		●			
	UNE-EN ISO 2409		●			
	ACV	●				
UPHOLSTERED OPTION	* Fire reaction standards			●	●	
	ISO 105 – B02 (outdoor)				●	
	UNE EN ISO 12947				●	

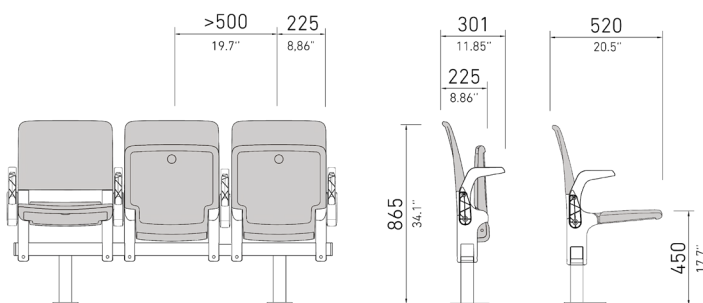
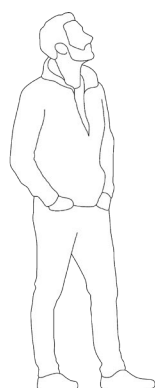
# ANNEX

## CHRONOS DIMENSIONS

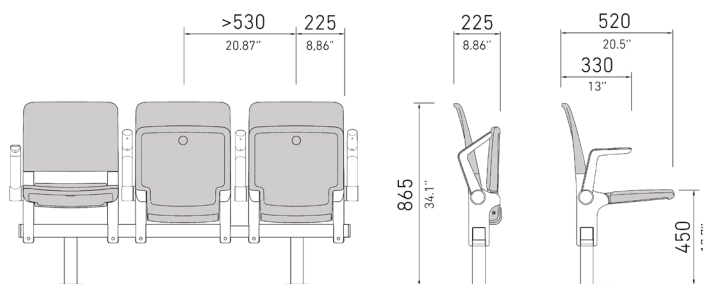
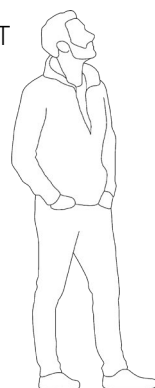
### CHRONOS STANDARD



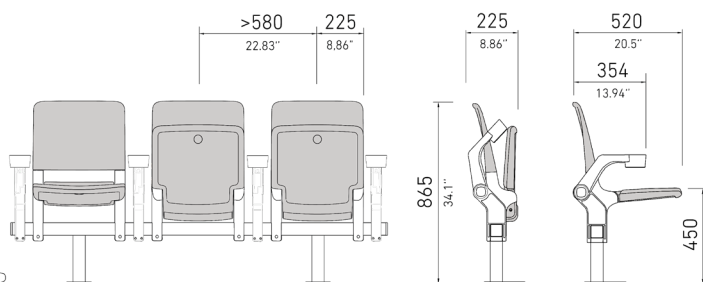
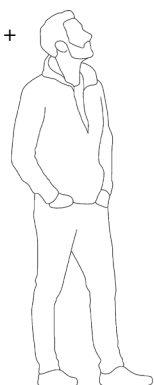
### CHRONOS FIX ARMREST



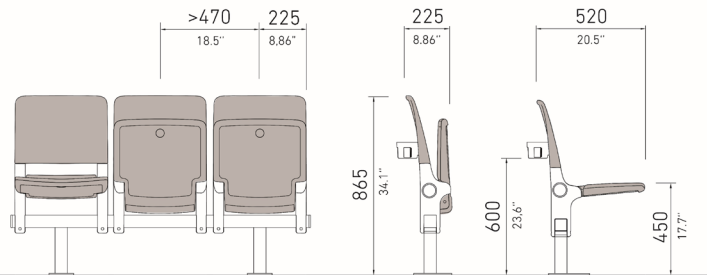
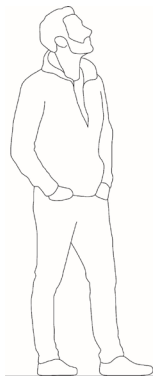
### CHRONOS TIP-UP ARMREST



### CHRONOS TIP-UP ARMREST + CUP HOLDER



**CHRONOS REAR CUP  
HOLDER**



FIGUERAS reserves the right to apply any modifications or updates required for the improvement or commercialisation of its products.