

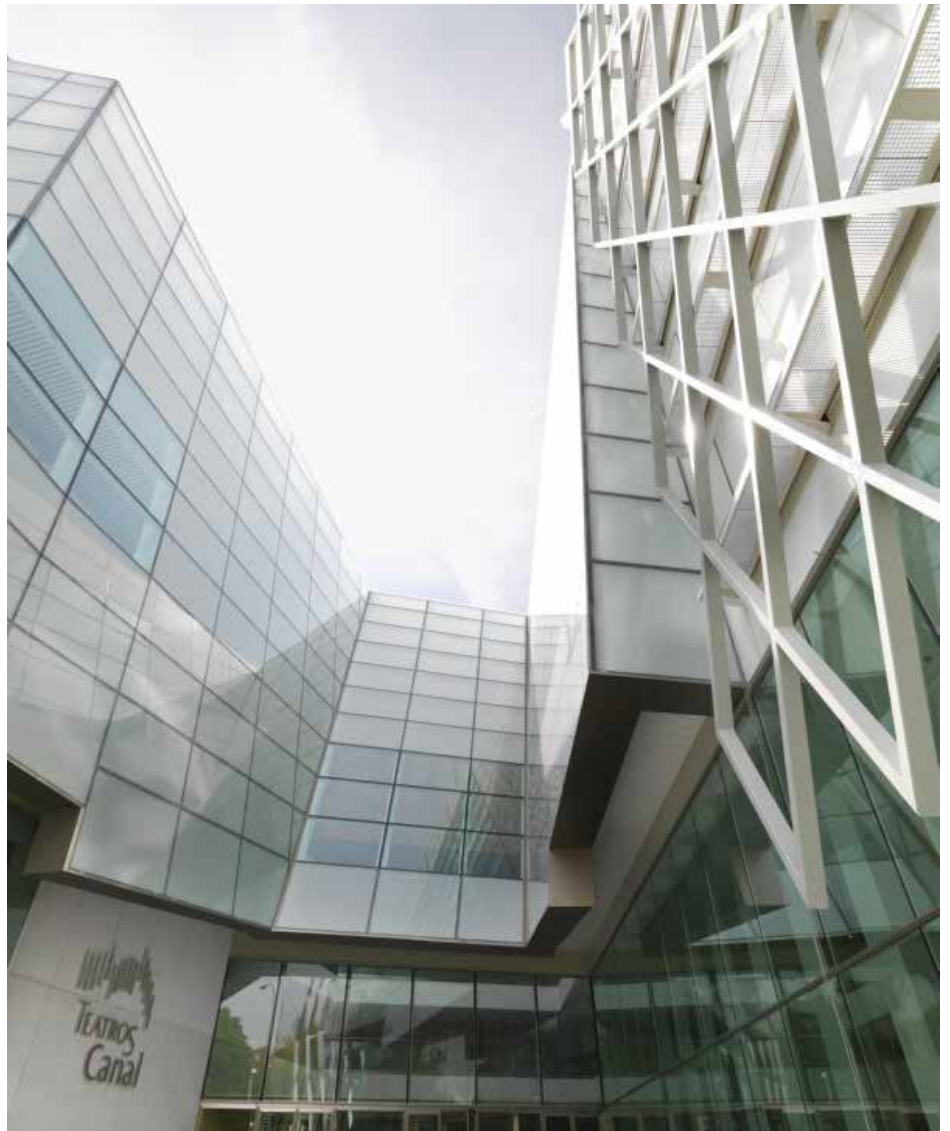
Teatros del Canal

Madrid, Spain

A cutting-edge venue for the performing arts

The Community of Madrid now boasts a new performing arts venue – Teatros Canal – located in the heart of Spain’s capital city. Teatros Canal is a new cultural complex that aspires to become a major centre both within Spain and internationally.

The new theatre centre is composed of three distinct volumes and has a built surface area of 35,000 m², distributed on 12 floors. The skin that envelops these floating volumes is like paper, capturing light and reflecting it back with attenuated sparkles.



Technical details:

Name: Teatros del Canal

Emplacement: Madrid, Spain

Year of development: 2008

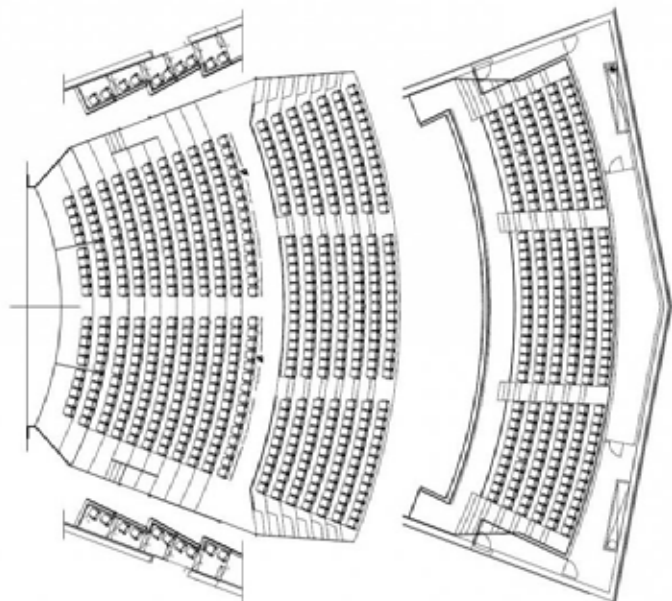
Architecture: Navarro Baldeweg
Asociados

Property: Comunidad de Madrid

Capacity: 851 seats

Product: 122 Alicia

Part of the building’s glass surface is translucent and transparent, while the other part is opaque and black, red and silver in colour, with a matte, velvety appearance. The zigzag form of the perimeter is intended to suggest the fall of a stage curtain as well as revealing the building’s interior to passers-by. Other construction materials used include granite in the walls and floor, and maple panelling in classrooms and lobbies.





Challenges and solutions

The three-building complex is designed to serve as a venue for all types of performing arts events. The largest auditorium, the Main Theatre, is equipped with 851 seats designed by architect Juan Navarro Baldeweg and developed by the Figueras Design Centre. The second space is a multipurpose hall, the Configurable Theatre. This auditorium can be adapted to meet the needs of creators and is versatile enough to accommodate up to 722 audience members. Finally, the Choreography and Dance Centre includes 12 specially equipped classrooms for training and professional development of dancers, with rehearsal spaces, studios and dressing rooms.

Product supplied

Seating is an integral part of the design of the auditorium and plays a key role in terms of comfort, acoustics and visibility. The design of the Alicia model used in the main theatre creates a distinction between its constituent elements. The base, which is geometrical in form, is an extension of the riser. Its dark colour contrasts with the red of the organic structure, the element that comes into contact with the body, a delicate design inspired by the elegant form of a pocket square.

Alicia is an extremely comfortable design that combines a seat upholstered in natural leather with an innovative mesh backrest that makes the chair easy on the eye and, most importantly,

enhances the acoustics of the auditorium. In fact, the acoustic properties of this model are one of its most notable features. The capacity of the theatre – 851 seats – is an acoustic imperative for performances in which the voices of those on stage must be clearly audible throughout the auditorium without amplification.

