



Top 5036

Technical Specifications

› **Structure**

- Made of tube and steel plate arc welding with continuous wire.

› **Polyurethane foam**

- Seat density: 60-65Kg/m³.
- Backrest density: 50-55Kg/m³.

› **Paint**

- Electrostatic powder polyester paint.
- Paint Thickness: 70-80 microns.
- Grid adhesion according to UNE-EN ISO 2409 : 100%.

› **Upholstery**

- Reaction to fire standards:
 - Spain: UNE-EN 1021 Parts 1 and 2.
 - France: NF D 60-013.
 - Italy: UNI 9175 Class 1.IM.
 - Germany: DIN 66084.
 - USA: CAL TB117.

› **Polypropylene**

- Material: Polypropylene Copolymer IF-727.
- Tensile strength according to ISO 527-2: 26 Mpa.
- Elasticity module according to ISO 527-2: 1250 Mpa.

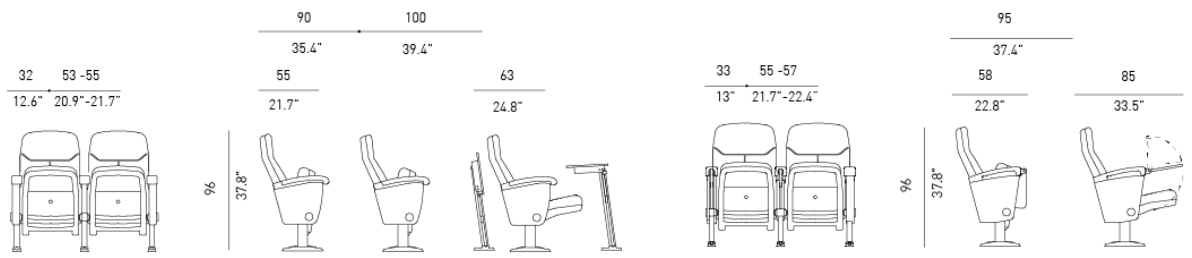
› **Fire resistance**

- BS 5852. Clause12. Ignition sources 0,1 and 5. (with approved fabric).
- USA:CAL T.B. 133 (with approved fabric).

› **Resistance and durability classification**

- UNE-EN 12727 Level 4 (Severe use).

General dimensions



Top 5036

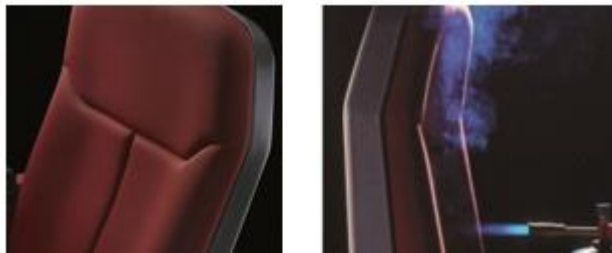
Top 5036 + F 48

Top 5036 PLX

General Description

› Modular seat made up of fully interchangeable elements.

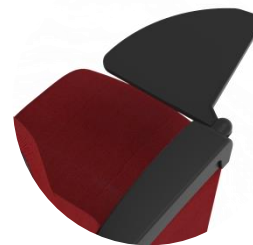
- The seat and backrest are made up of two blocks of moulded polyurethane foam, with a metal interior structure and upholstery fully integrated into the foam through the Integral Form System, without seams or stitching.
- Optionally, between the upholstery and the foam, both in the seat and in the backrest, there is a 5 mm fire protection curtain - TS System - that prevents fire from penetrating into the foam, delaying the emission of toxic gases and flames.



- The backrest mattress is anatomically shaped, with a lumbar support and incorporating vertical and horizontal channels to mark the head area, helping to increase the comfort of the backrest in long-lasting uses.



- The seat cushioning is anatomically shaped and smooth, without any types of channels or grooves therefore preventing the accumulation of dirt. The seat and backrest are protected by fully washable IF727 polypropylene injected shells that protect the upholstery on the back.
- The seat folds automatically by means of a double spring system introduced inside the seat shell (tested at 100,000 cycles), requiring no lubrication and is extremely silent.
- The seat is assembled on two metal feet that have an integrated system that supports the ball-and-socket joint - with a blocking mechanism - that receives the axis of the seat and allows an easy substitution of the seat without having to disassemble the whole seat. The feet are made of tubular steel structure finished in black or grey epoxy paint. The fixation to the floor is made by using expansion plugs or other systems depending on their features.
- The seat adapts to the specific inclination of the room thanks to its foot base. The rows are formed by interconnected backrests and allows the formation of completely rigid and stable rows, reinforcing the fixation to the ground.
- The arms are made of polyurethane foam, with an internal metal structure. The seat has holes in the back that allow adequate acoustic absorption when the seat is raised and unused.
- Optionally, the backrest can incorporate a piece of upholstery in its upper back or can be fully upholstered. The seat can also be fully upholstered without losing any of its acoustic properties.
- Optionally and as an extra accessory it may incorporate a writing lectern (PLX) with anti-panic folding system. The lectern is made of polypropylene with a black non-slip textured finish.



Materials and finishes

› Metal Parts Features

- The steel complies with the following European standards:
 - Tube up to 2mm thick: Alloy designation according to UNE-EN 10305 part 3: E-220.
 - Tube more than 2 mm thick: Alloy designation S275JR.
 - Plate: alloy designation according to EN 10111: DD12.

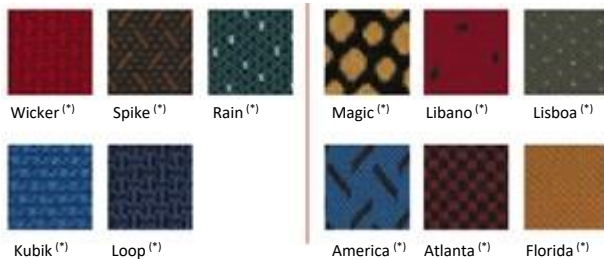
› Protection and Paint of Metal Parts

- Prior to powder coating, metal parts are treated with a three stage, non-acidic cleaning process to achieve superior finish adhesion. The finishing of the thermosetting polyester powder coating must be applied by electrostatic means with a minimum thickness of 70-80microns.
 - After coating, the parts must be oven cured to create a durable finishing that meets the following requirements:
 - Composition: Polyester powder suitable for outdoor use.
 - Cross Cut Test Adhesion according to UNE-EN ISO 2409 classification GT 0-1.
 - Scratch resistance according to ISO 15184:98 Level HB-H.
 - Total thickness: 70-80Microns.
 - Rust resistance (NSS), according to ISO 9220: 200 h.
 - Resistance to MEK 50 double rubs without paint stripping.

› Upholstery

• Integral Form / Traditional

Group A:
Figueras Fabrics ®



• Only Traditional

Group A:
Figueras Fabrics ®



Group B:



Group B:



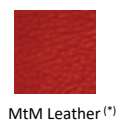
Group V:



Group L:



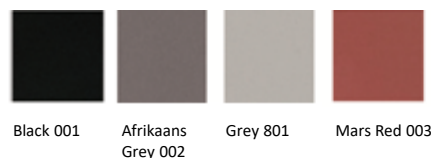
Group L MTM:



(*) Fabric sample / printed by collection. Check colours available.

(*) Quotation for traditional upholstery upon request.

› Pigments for plastic parts



› Pigments for metal parts



› Plastic parts features

- High pressure injection moulded seat and backrest shells made of high impact copolymer polypropylene. High durability pigmented coloured plastic with textured exposed surface.

› Seat and Backrest Cushions Features

- The seat and backrest cushions are made of cold moulded polyurethane foam.
 - In the inside, both include metallic tube structures and steel plates, with springs. This system guarantees great comfort and avoids the appearance of deformations in the foams, even after an intensive use.
 - The upholstery is made with the Integral Form system, forming a unique element with polyurethane foam and metal structure. This prevents the appearance of wrinkles, even after intensive use.
 - Optionally, a fire barrier can be incorporated between the upholstery and the PUR foam.
 - They comply with all international fire behaviour requirements.
 - Seat foam density 60-65 kg/m³.
 - Backrest foam density 50-55kg/m³.

Ask our team for further available options

However, for the purpose of facilitating to the customer the latest novelties, FIGUERAS reserves the right to introduce the modifications and variations that it considers most appropriate and suitable for marketing its products.