



Arena 302

Technical specifications

› **Structure**

- Made of tube and steel plate arc welding with continuous wire.

› **Paint**

- Indoor: Electrostatic polyester powder
- Outdoor: Electrostatic polyester powder (with electrolytic coating)
- Coating thickness:
 - Indoor: 70-80 microns
 - Outdoor: 90-100 microns
- Grid adherence according UNE-EN ISO 2409: 100%

› **Polypropylene**

- Material:
 - Indoor: Copolymer Polypropylene IF-727
 - Outdoor: Copolymer Polypropylene IF-728 with U.V colour stabilisers
- Tensile stress at yield according ISO 527-2: 26 Mpa
- Tensile modulus according ISO 527-2: 1250 Mpa

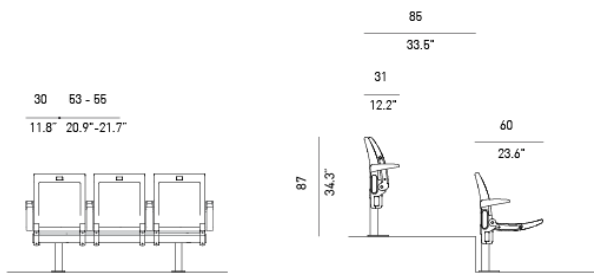
› **Fire resistance**

- BS 5852. Clause12. Ignition sources 0, 1 and 5. (with approved fabric).
- USA: CAL T.B. 133 (with approved fabric).

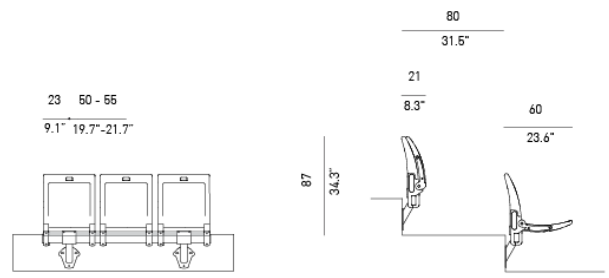
› **Resistance and durability classification**

- UNE-EN 12727 Level 4 (Severe use).

General dimensions



Arena 302BR



Arena 303

General description

Compact seat design that after installation gives the rows a continuous surface image. The seat folds in an automatic and silent way, without blows and fits perfectly with the backrest piece, occupying only 21cm.

This seat is suitable for sports venues and arenas, providing great comfort in a minimum of space. The seat has generous dimensions in the position of use and very small in the folding position.

In the front of the seat and in the back of the backrest there is a space of 13 x 22 cm that allows advertising images, logos or corporate identity elements to be inserted, usually on a screen-printed adhesive support. This space is dimensioned to accommodate up to 50 adhesive units without having to remove the old one to place the new one.



The set is made up of two independent elements of seat and back, subject to a metallic structure adapted to the characteristics of each tier. With this system a great access freedom between the rows is obtained without harming the comfort of the user. The folded seat occupies only 21cm.

The seat is folded automatically by means of two springs inserted in the seat, completely protected from external agents, self-lubricating and long-lasting and reliable. The automatic return of the seat also has a braking system -Controlled Soft Rise Technology- that acts in the final part of the travel slowing down the return movement and thus avoiding the noisy blow usual in this type of products. This feature makes the Arena seat the ideal product for multipurpose spaces, which combine sporting events with musical events and indoor performances.

The design allows a perfect closing between seat and backrest, in such a way that the inner part is completely protected from the solar rays and from the accumulation of dust and dirt. The need for maintenance of the installation is greatly reduced. This design also increases the safety of the user thanks to the absence of elements that protrude and can signify points of shock. This also makes vandalism more difficult.

Seat and backrest are made of polypropylene copolymer by means of blowing technique.

The seat has a housing to accommodate a numbered plate, so that it is embedded in its interior, preventing it from being torn off. With this system, in addition, the visibility of the seat number is optimal.



The seat has anti-slip herringbone stripes for correct positioning of the user. There is also a version with integrated seat and backrest upholstery that substantially improves comfort, ideal for VIP areas.

The seat can be installed with a minimum wheelbase of 50 cm and then increased as desired. This is due to the fact that the seats are individually assembled on a support bar, which gives great flexibility in the wheelbases and makes it possible to perfectly regulate the level of comfort desired for users. The arms are also independent of the seat and we can place them at our own will and at the distance considered appropriate from the seats.



Reaction to fire: This product complies with international standards.

However, for the purpose of facilitating to the customer the latest novelties, FIGUERAS reserves the right to introduce the modifications and variations that it considers most appropriate and suitable for marketing its products.

However, for the purpose of facilitating to the customer the latest novelties, FIGUERAS reserves the right to introduce the modifications and variations that it considers most appropriate and suitable for marketing its products.

Materials and finishes

› Metal Parts Features

- The steel complies with the following European standards:
 - Tube up to 2mm thick: Alloy designation according to UNE-EN 10305 part 3: E-220.
 - Tube more than 2 mm thick: Alloy designation S275JR.
 - Plate: alloy designation according to EN 10111: DD12.

› Protection and Paint of Metal Parts

- Prior to powder coating, metal parts are treated with a three stage, non-acidic cleaning process to achieve superior finish adhesion. The finishing of the thermosetting polyester powder coating must be applied by electrostatic means with a minimum thickness of 70-80microns.
- After coating, the parts must be oven cured to create a durable finishing that meets the following requirements:
 - Composition: Polyester powder suitable for outdoor use.
 - Cross Cut Test Adhesion according to UNE-EN ISO 2409 classification GT 0-1.
 - Scratch resistance according to ISO 15184:98 Level HB-H.
 - Total thickness: 70-80Microns.
 - Rust resistance (NSS), according to ISO 9220: 200 h.
 - Resistance to MEK 50 double rubs without paint stripping.

› Plastic parts features

- High pressure injection moulded seat and backrest shells made of high impact copolymer polypropylene. High durability pigmented coloured plastic with textured exposed surface.

› Upholstery

- Group V:



Tecno Valencia (*)

(*) Fabric sample / printed by collection. Check colours available.

› Pigments for plastic parts



Black 001 (*) Afrikaans Grey 002 Grey 801 (*) Mars Red 003 Green 005 White 006 Yellow 205



Red 214 Green 302 Burgundy 400 Beige 700 Grey 800 Grey 7024 Blue 802

(*) Colours available for side support / armrest.

› Pigments for metal parts



Black N200 Grey

› Seat and Backrest Cushions Features

- The seat and backrest cushions are made of cold moulded polyurethane foam.
- In the inside, both include metallic tube structures and steel plates, with springs. This system guarantees great comfort and avoids the appearance of deformations in the foams, even after an intensive use.
- The headrest is also made of cold molded foam.
- The upholstery of the cushions and the headrest can be handcrafted, allowing all types of upholstery: fabrics, similar leather or natural leather, within the range of products approved by Figueras.
- This allows you to customize the seat according to the requirements of each project.
- Optionally, a fire barrier can be incorporated between the upholstery and the PUR foam.
- They comply with all international fire behaviour requirements.